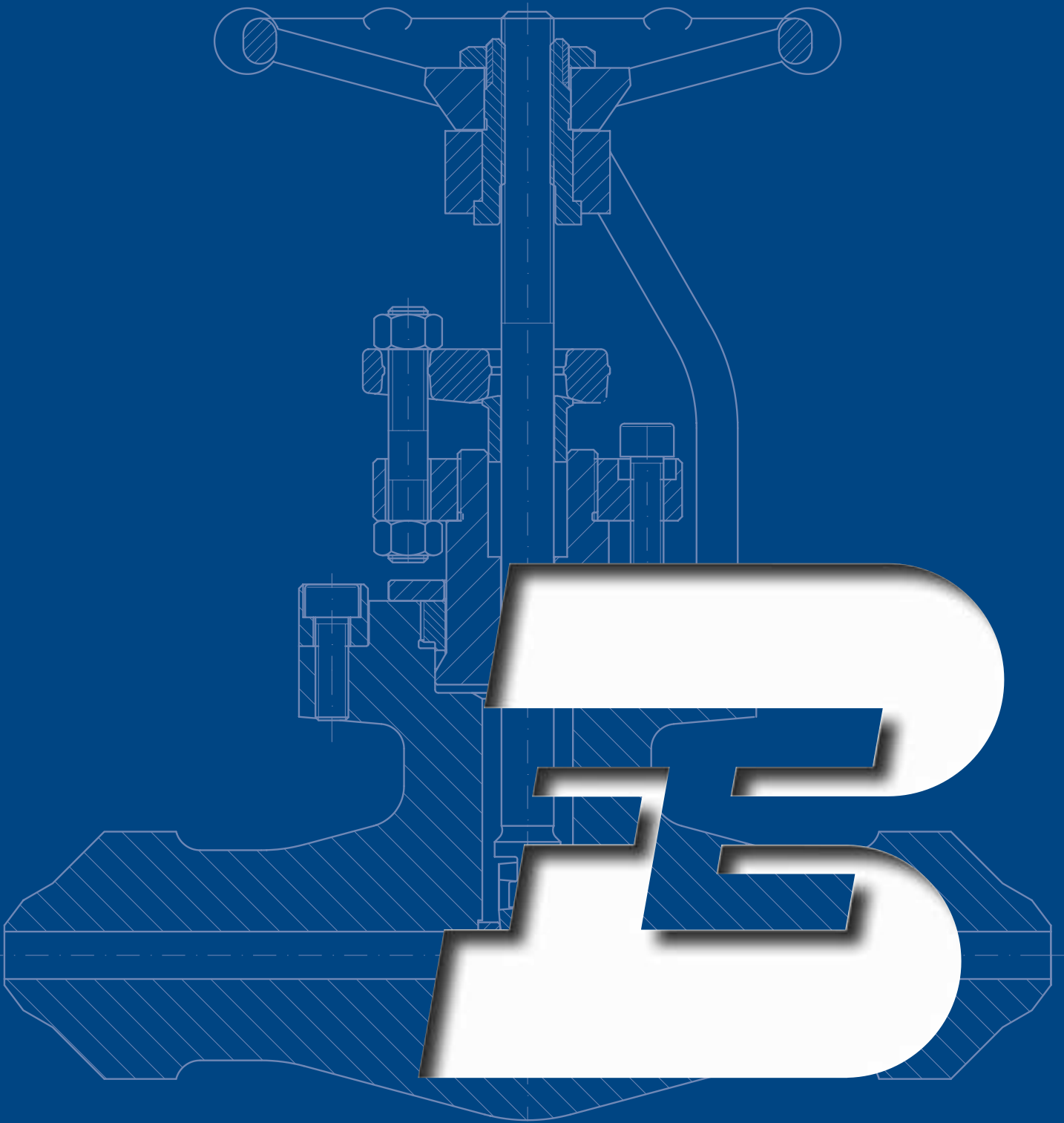
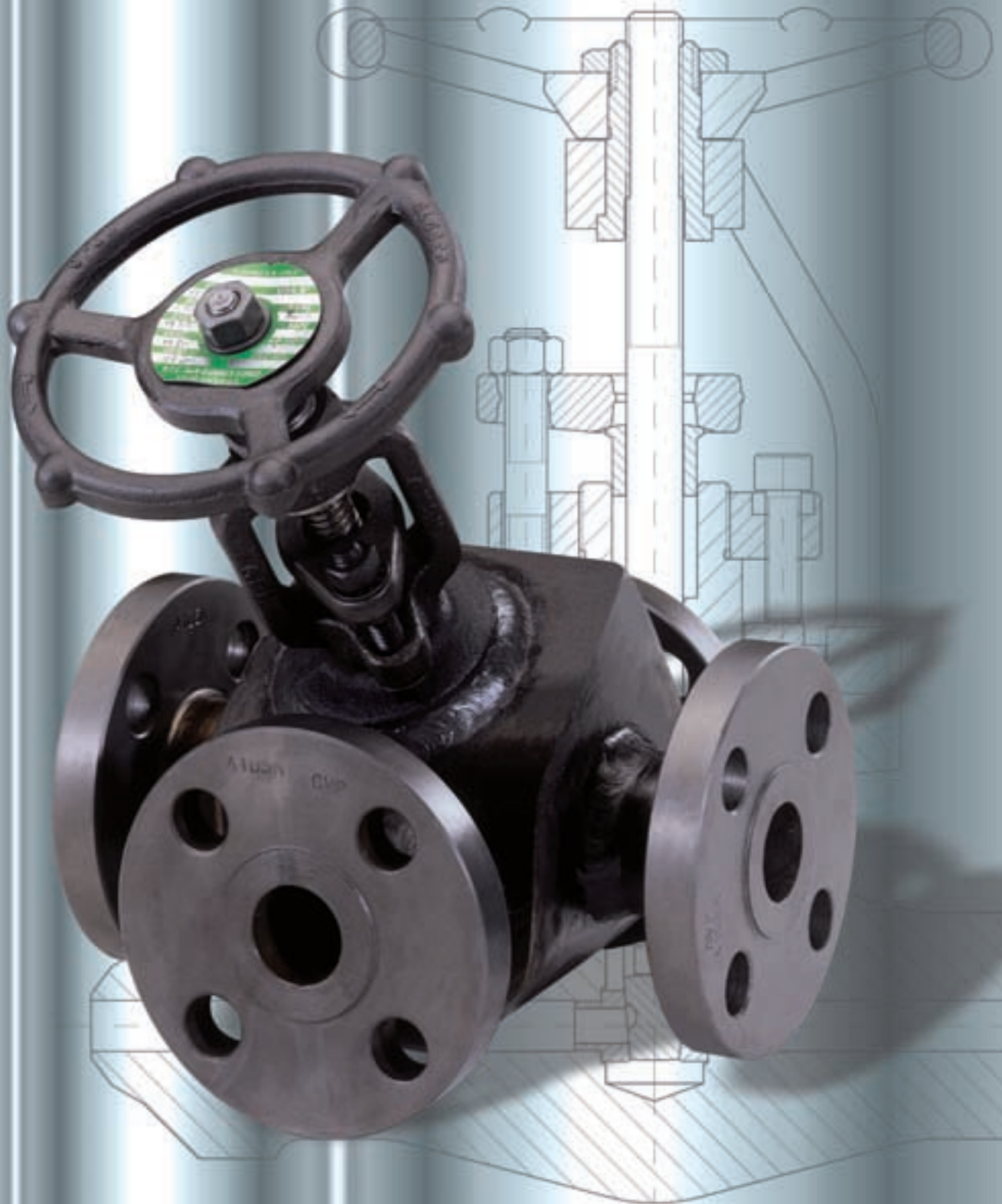


SPECIAL FEATURES



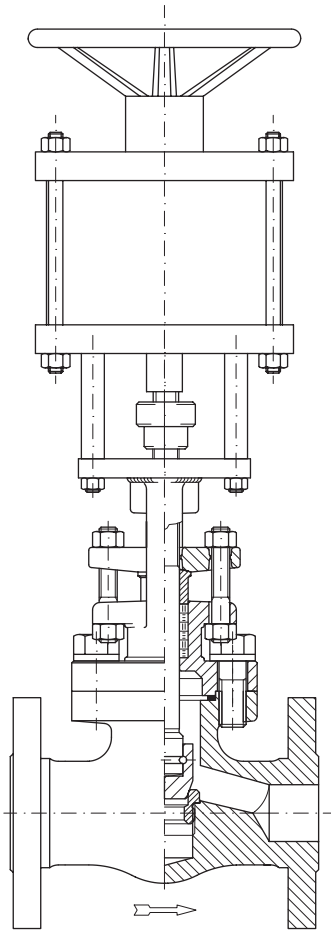
SPECIAL FEATURES



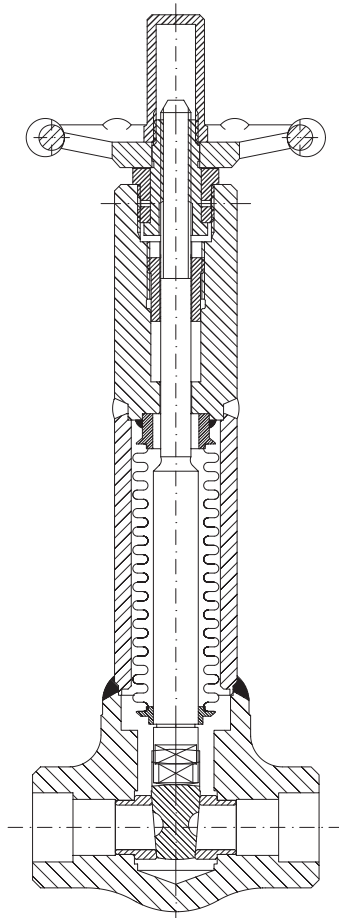
1 - All Gate and Globe valves can be equipped with pneumatic or hydraulic actuator, double effect or spring action.

2 - Bellows seal valves full protected.
3 - Flexible and split wedge available on request.

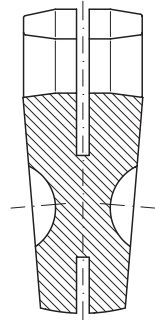
4/5 - Position indicator and stem protection on Gate and Globe valves.



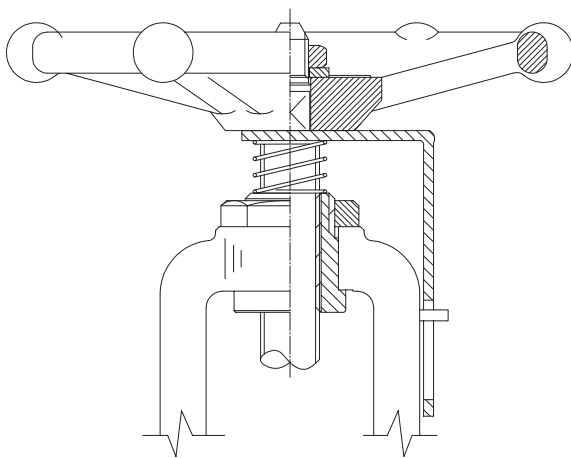
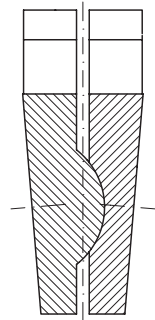
1



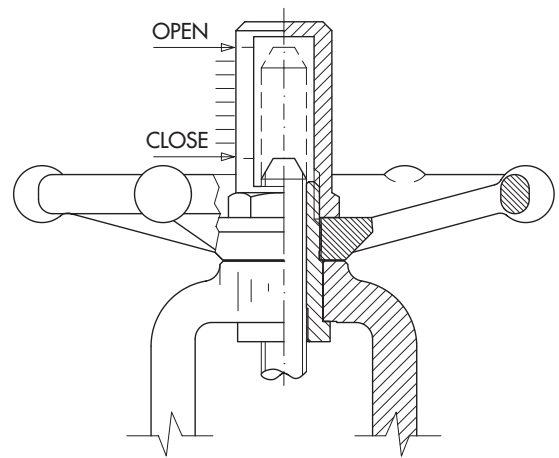
2



3



4



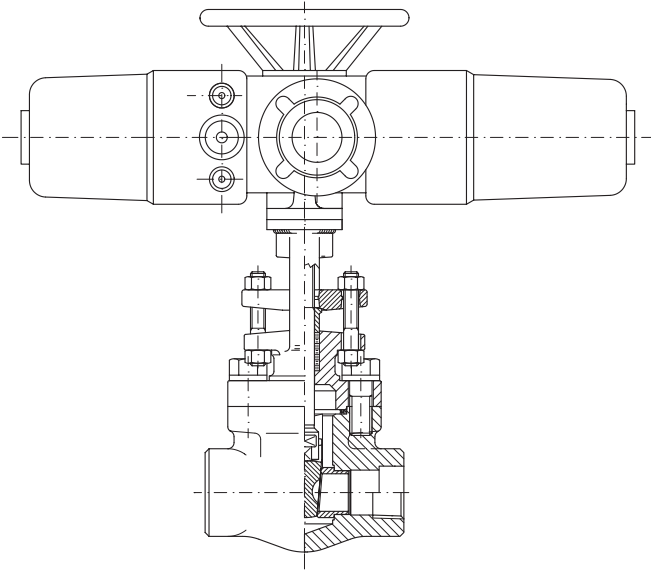
5

6 - All Gate and Globe valves can be equipped with electric actuator, per Customer's specification.

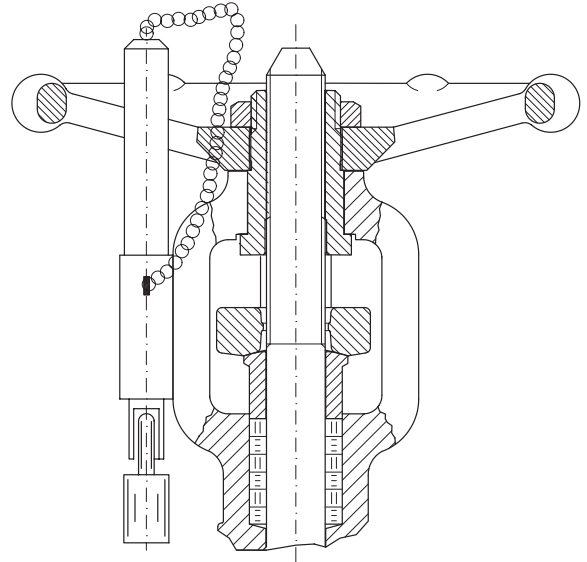
7 - Locking device with padlock.

8 - Stuffing box with live loading system.

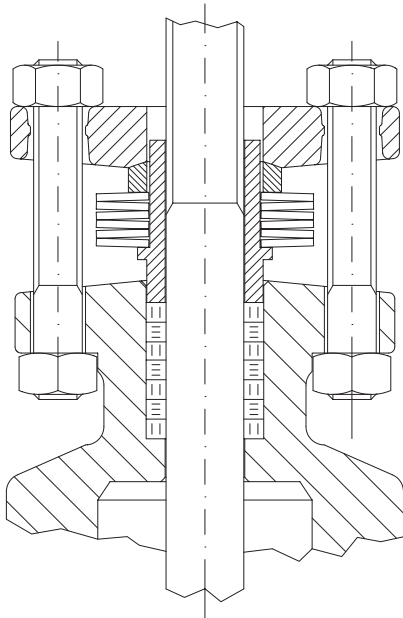
9 - Quick opening Globe and Gate valves.



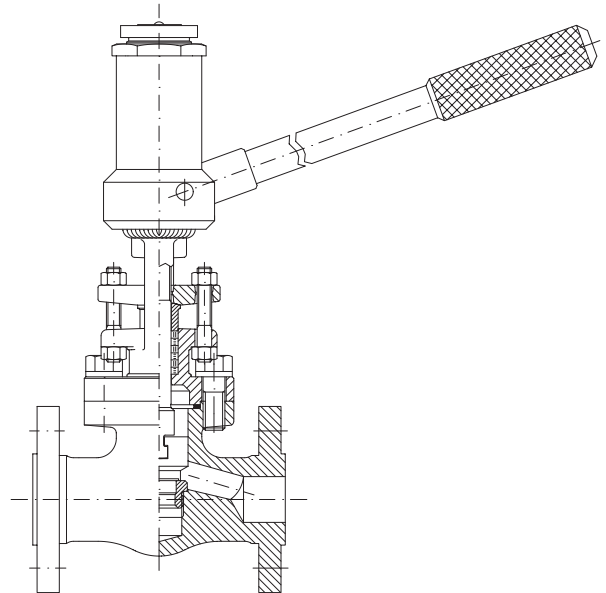
6



7



8



9

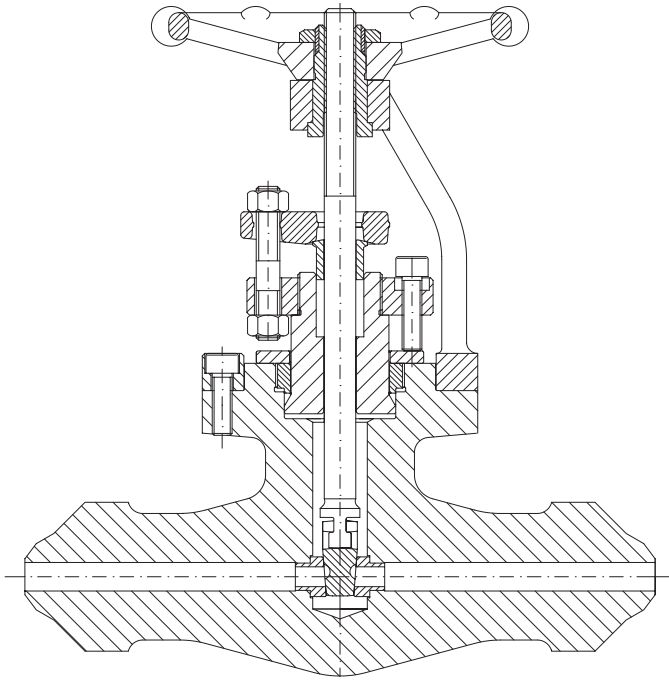


SPECIAL FEATURES

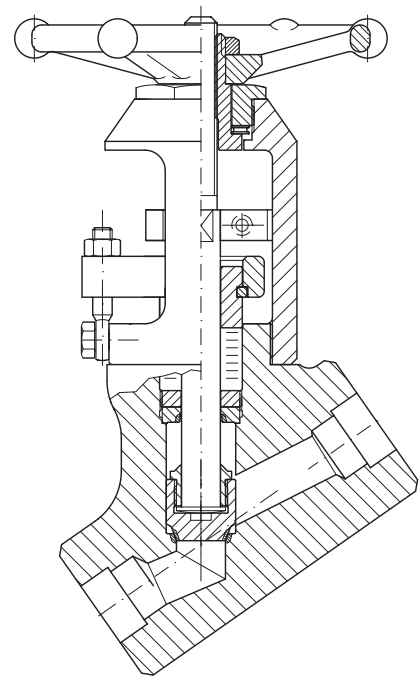
10 - Body Bonnet connection pressure seal design.
11 - Bonnet-Less type, non rotating stem, no rising handwheel, position indicator.

12 - Special pipe connection like clamp-lock, special B.W.E., nipples or other customer's request.
13 - All valves can be supplied with a deep stuffing box with lantern ring and a double ball grease injector.

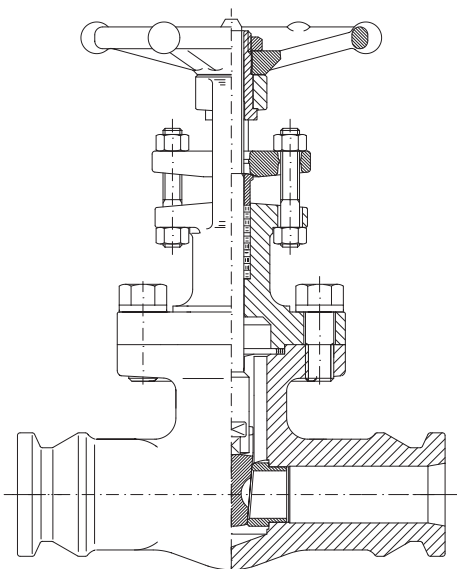
14 - Typical floor stand application



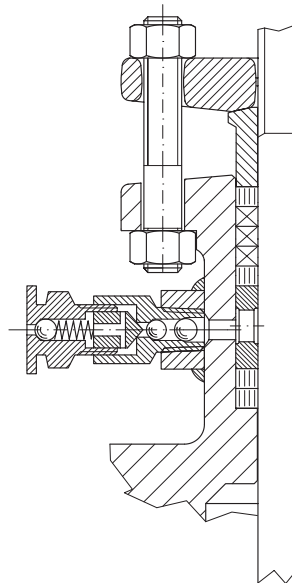
10



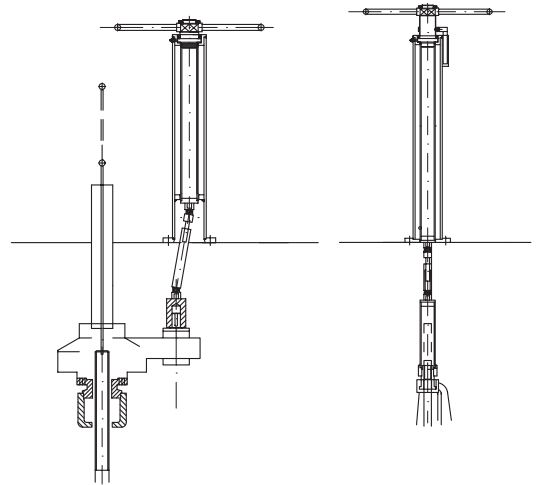
11



12



13



14

SPECIAL FEATURES

